



# Roger™ Covert 2.0

Crystal-clear digital communication to  
ensure successful missions

A Sonova brand

**PHONAK**  
communications





“over and out”



Say “over and out”  
to analog

Communication is critical in  
physical surveillance.

Every message must be clearly  
understood by all team members  
in any situation.

Say “roger”  
to digital



### Roger™ Covert 2.0

Roger™ Covert 2.0 is 100 % digital and has been specifically designed for the highest level of intelligibility and discretion in the most challenging environments.

Only Roger™ Covert 2.0 enables crystal-clear digital communication to ensure successful missions.



# Crystal-clear digital communication to ensure successful missions

## Speech quality

Roger™ Covert C is optimized to capture speech for maximum understanding and intelligibility even in the noisiest environments, such as sporting events or railway stations. And thanks to Roger's digital transmission technology, the earpiece's audio quality is outstanding.

## Ease of use

Roger™ Covert C has been designed to be as simple to use as possible. Setup takes moments, and requires no technical knowledge. With its few buttons, operational usage is easy to handle and intuitive.

## Reliability

Roger™ Covert C is completely immune to electromagnetic interference, and won't interfere with any other systems operating on similar frequencies. The system's 128-bit AES encryption guarantees secure transmissions.

## Discreetness

Roger™ Earpiece C is almost invisible in the ear canal. The main Roger™ Covert C unit and remote control are small enough to disappear under clothes or in a pocket. And without a neckloop to worry about, operatives can blend in even more easily.

## Connectivity

Roger™ Covert C provides an encrypted Bluetooth connection to the cell phone or radio. In addition to Bluetooth, Roger™ Covert Dual C offers a detachable wired connection, to a radio or a cell phone, for added flexibility.



# Why Roger™

## Covert 2.0 beats analog technology of the last century

### The limitation of analog systems

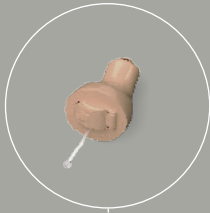
Traditional analog systems use a neckloop, which emits an electromagnetic field from the source to induce a signal in the earpiece. One of the weaknesses of inductive systems is that other people in the vicinity using inductive solutions may intercept the voice communication. In addition, electromagnetic interference from catenaries, vehicle alternators and other electrical equipment are audible. Therefore, with inductive systems, the communication can be drastically restrained.

### The unique advantages of Roger digital transmission

Roger is a patented technology developed by Phonak, which features adaptive, wireless transmission and runs on the 2.4 GHz band. Roger audio signals are digitized and packaged into very short digital bursts of codes packets and broadcast several times, each time using different channels between 2.4000 and 2.4835 GHz. Frequency-hopping between channels, in combination with these repeated broadcasts, avoids interference issues and ensures successful transmission. Phonak has developed the proprietary Roger microchip for dedicated use with miniaturized ear-level receivers.



# Roger™ Covert 2.0



## Roger™ Earpiece C

The Roger™ Earpiece C is a masterpiece of miniaturized technology. It offers best-in-class secure audio reception on 2.4 GHz with AES-128 encryption. Discretion and a comfortable fit within the ear canal are guaranteed, thanks to its ergonomic design. With the remote control, the Earpiece can switch between personal and vehicle networks.

## Roger™ Covert C Roger™ Covert Dual C

The Roger™ Covert C is the central unit of the Roger™ Covert system. Its miniaturized components create a discreet, reliable and easy-to-use device that offers high-quality transmission for more than 13 hours of autonomous operations. The main unit connects wirelessly to the Roger™ Earpiece C and the Roger™ Remote C. In addition, the main unit has a Bluetooth® interface to connect to the user's radio or cell phone. The micro-USB socket can be used to charge the main unit or to connect headphones (listening only).

Roger™ Covert Dual C offers, in addition to the same features as Roger™ Covert C, a detachable connection to a second radio or cell phone.



## Mini-microphone MM11

The MM11 microphone, hard-wired to the Roger™ Covert unit, offers world-beating voice pick-up in a discreet housing. This neutral-looking lapel microphone uses beam-forming and noise cancelling technology to deliver excellent speech quality even in noisy conditions. Using Phonak's Digital Sound Processing it delivers perfect speech intelligibility, even when the user is whispering.

## Roger™ Remote C Roger™ Remote Dual C

Roger™ Remote C offers discreet, neutral, push-to-talk (PTT) functionality designed to avoid unwanted triggering. Besides PTT functionality, the user can mute and adjust the volume of the Roger™ Earpiece C, accept and reject telephone phone calls, send covert 'beep' signals to teammates, and switch between personal and car systems. The Roger™ Remote Dual C version also allows temporary listening priority switching between the communication channels.



## Roger™ CarKit C

The Roger™ CarKit C is an easy-to-fit transmitter that sends an encrypted audio signal from the vehicle's radio installation directly to the Roger™ Earpiece C.

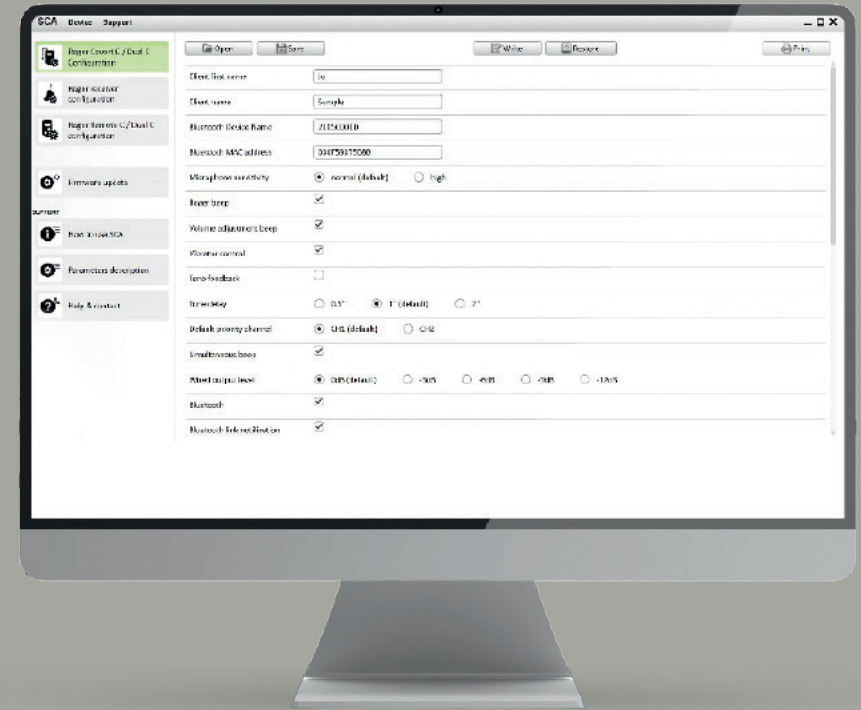
# Compatibility with communication devices

Roger™ Covert offers compatibility, wired or Bluetooth®, to most popular professional police radios, POC and mobile phones. Mobile phones can be used for phone calls, conference calls or for PTT-Apps.



Roger™ Covert C can handle one Bluetooth® link while Roger™ Covert Dual C separable can simultaneously handle one Bluetooth® link and one separable wired link.

# Future-proof and as individual as your mission



## SCA – Security Configuration App

SCA is a MS-Windows Application that allows to upgrade and configure your Roger™ Covert System. You can activate or deactivate several functions and notifications, or change the Bluetooth name of your Roger™ Covert system. In addition, Roger™ Covert is always evolving to follow the requirements of new communication devices. Therefore, in case of new compatibility or functionality, you can easily upgrade your device using SCA and the USB interface.



## About us

Since 1992 we have helped professionals to communicate effectively in challenging environments. Thanks to our close collaboration with end users we develop solutions that perfectly meet their needs. Our miniaturized wireless earpieces, headsets and professional hearing protection devices are used and trusted by demanding customers around the world. Based in Murten in one of Switzerland's first zero energy office buildings, our company is a member of Sonova Group, a leading provider of innovative hearing care solutions.

[www.phonak-communications.com](http://www.phonak-communications.com)